

PLATINUM PAGES

FROM YOUR PLATINUM APPROVED LABORATORY

Peace of Mind with Genuine Abutments on Genuine Implants

The connection between the implant and the abutment is of great importance when it comes to long-term stability and the successful outcome of a restoration.

The Right Balance

The right balance in connection design, materials used, precise state-of-the-art manufacturing, rigorous quality controls as well as many years of experience from Straumann, provides prosthetic components with reliability whilst giving complete confidence to both the patient and the restorative dentist.

This accurate fit of the abutment, screw and implant is achieved by harmonising and matching tolerances for the performance of the parts. Straumann® abutments and Straumann® implants are designed to function together as intended over time by following a controlled production and inspection process.

Tolerance

Harmonised and matched tolerances minimise the possibility of displacements of abutments in implants with and without applied forces, resulting in a connection with minimal wear and stability. Tolerances which are not aligned on an implant-abutment connection in its intended use may negatively impact on the stability and durability of the restoration. Therefore, Straumann recommends the exclusive use of original Straumann components for all engaging parts as competitors do not know Straumann's tolerances. Combining Straumann products with parts from different manufacturers voids the Straumann® warranty.

Handling

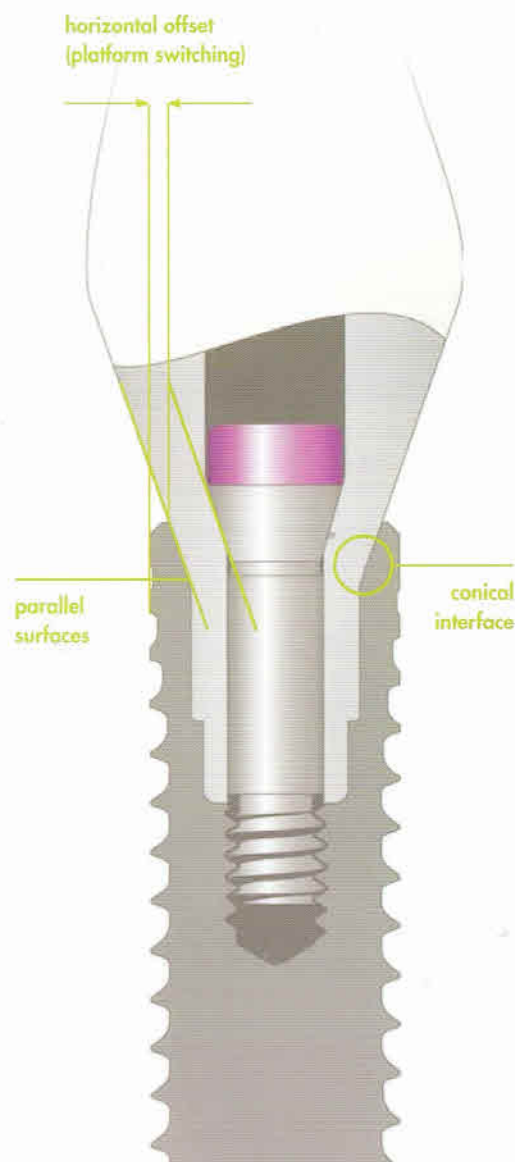
Handling characteristics are another important factor, both for the restorative dentist (in terms of assembly of the prosthetics components on the implant) as well as for the dental technician (in terms of assembly of the restoration on the master model).

By using matched components clinicians and technicians can be assured that excellent guidance and tactile feedback is achieved during the assembly process. The result is a hassle-free assembly procedure which helps to save time, compensates for low visibility and does not require X-rays to confirm the proper seating of the prosthetic components.

Bio-compatibility

Additionally, the bio-incompatibility of restorative parts can have an effect on adverse tissue reactions and inflammation of bone and soft tissue in patients. Material compatibility is important for components which come into contact with each other, such as the abutment, screw and implant. Engaging parts made of different materials may trigger galvanic corrosion, a process that can be triggered when two or more different sorts of metal come into contact in the presence of an electrolyte (e.g. saliva). The resulting corrosion, from the surfaces of the metals involved, may contaminate the surrounding bone and soft tissue and leak into the mouth of the patient.

* Combining parts from different manufacturers voids the Straumann guarantee



Conclusion: Only Straumann on Straumann ensures the best possible performance.

The combination of Straumann® abutments on Straumann® implants is designed to achieve the best possible performance of the implant-abutment connection and therefore of the entire restoration. Straumann® abutments and Straumann® implants are designed for each other to ensure harmony between design (shapes and features), tolerances, surface qualities and materials used*.

ITI Congress UK & Ireland

Liverpool December 1-3 2011



Register before 15th July to enjoy the 'early bird' discount.

We look forward to welcoming you to our 2011 ITI National Congress in Liverpool 'Implants in Practice'. Implant dentistry is a team effort and the programme is aimed at our predominant membership of dentists in general practice and their team of technicians, clinical dental technicians and dental care professionals.

There is also an impressive line-up of international speakers:

Urs Belser, Switzerland	Daniel Buser, Switzerland
Alessandro Devigus, Switzerland	Ken Hebel, Canada
Frauke Mueller, Switzerland	Marc Quirynen, Belgium
Frank Schwarz, Germany	Daniel Thoma, Switzerland
Daniel Wismeijer, The Netherlands	

Registration Fees

	Early registration by 15th July 2011	Late registration from 16th July 2011	Onsite registration from 30th Oct 2011
Pre-Congress			
ITI Fellow/ITI Member	£190	£260	£310
Non-ITI Participant	£330	£400	£450
Main Programme			
ITI Fellow/ITI Member	£370	£520	£570
Non-ITI Participant	£570	£740	£790
Postgraduate Student*	£210	£300	£350
Parallel Sessions (one-day)			
Technicians/CDTs	£190	£260	£310
Dental Team	£60	£75	£125

Fees are inclusive of VAT

*A written and signed confirmation from your Programme Director or Dean of Faculty is mandatory and must be submitted with your application form at the time of booking.

Visit: www.iti.org/congressuk-ireland for more information or to register

ITI Pathway 2011-2012

Foundation in Implant Dentistry with Concomitant Mentoring

Commencing September
Places Limited to 24
Course Fee: £6,000 + VAT*
CPD: 78 hours verifiable

The Course is designed for general dentists who are setting out on the training pathway in implant dentistry and looking for a solid foundation in Straightforward level cases.

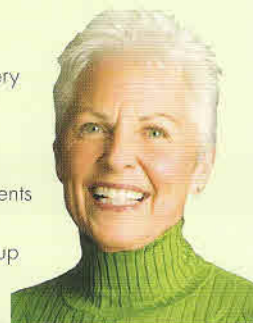
**For more information please
visit www.itieducation.org/uk**

**2010 COURSE
PRICE HELD!**

*Please see booking form for details of payment options

Straumann Classic Line

The Straumann Classic line is a very convenient service for our customers as we provide prosthetic components for patients who received implants up to 35 years ago.



The patient receives a genuine Straumann part that fits perfectly on the implant.

The dentist as well as the patient knows that Straumann will also provide those parts in the future.

We expect limited demand only, production of all parts is fully outsourced. The production costs are therefore much higher than for the reference products.

Straumann Classic Line

- 8 and 9 degree cone abutment sets
- Octa abutment sets
- Transversal screw set
- Other single parts

For more information about the Straumann Classic Line contact Straumann's Customer Service Department on: 01293 651240

www.straumann.co.uk

Laboratory Details

Maurice Hood Dental Laboratory Ltd.
Houghton Street
Oldbury
West Midlands
B69 2BB

Tel: 0121 544 8855
E-Mail: info@mauricehood.co.uk
Web: www.mauricehood.co.uk

**Platinum Approved
by Straumann**